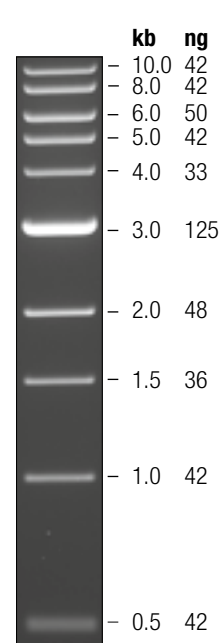


Built for Perfect Migration.

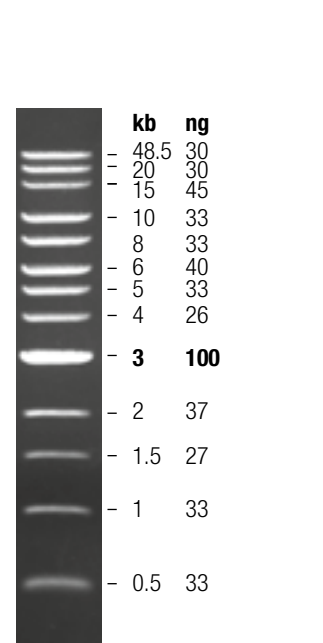


Magellanic Penguin (*Spheniscus magellanicus*) migrate northwards during winter to find adequate food resources.

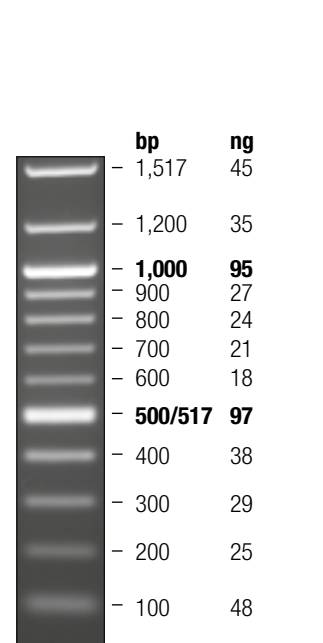
DNA Ladders



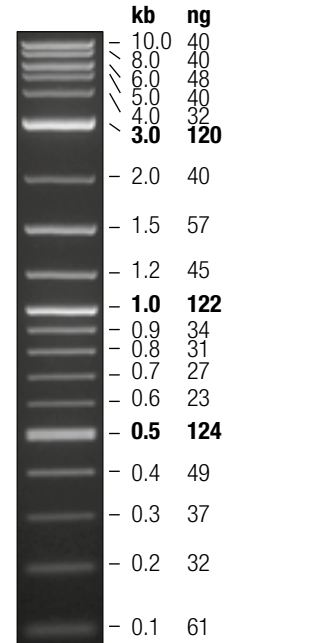
1 kb DNA Ladder
0.8% TAE agarose gel.
Mass values are for 0.5 µg/lane.
NEB #N3232
Also available as "ready-to-use":
Quick-Load Purple
NEB #N0552
Quick-Load
NEB #N0468
TriDye
NEB #N3272



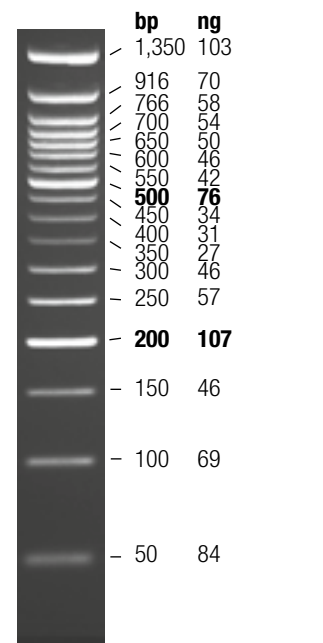
1 kb Extend Quick-Load® DNA Ladder
0.6% TBE agarose gel.
Mass values are for 0.5 µg/lane.
NEB #N3239
Also available as "ready-to-use":
Quick-Load Purple
NEB #N0551
Quick-Load
NEB #N0467
TriDye
NEB #N3271



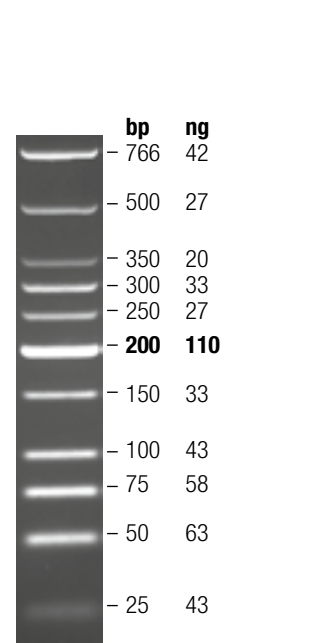
100 bp DNA Ladder
1.3% TAE agarose gel.
Mass values are for 0.5 µg/lane.
NEB #N3231
Also available as "ready-to-use":
Quick-Load Purple
NEB #N0550
Quick-Load
NEB #N0469
TriDye
NEB #N3270



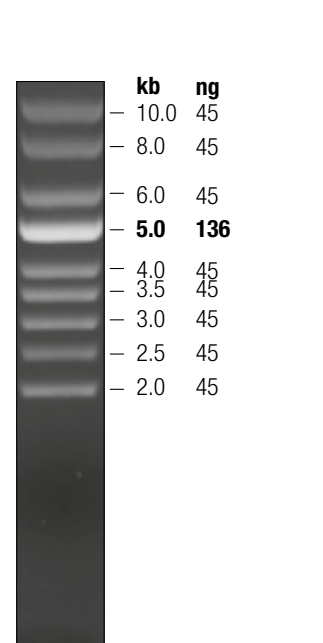
2-Log DNA Ladder
1.0% TBE agarose gel.
Mass values are for 1 µg/lane.
NEB #N3200
Also available as "ready-to-use":
Quick-Load Purple
NEB #N0550
Quick-Load
NEB #N0469
TriDye
NEB #N3270



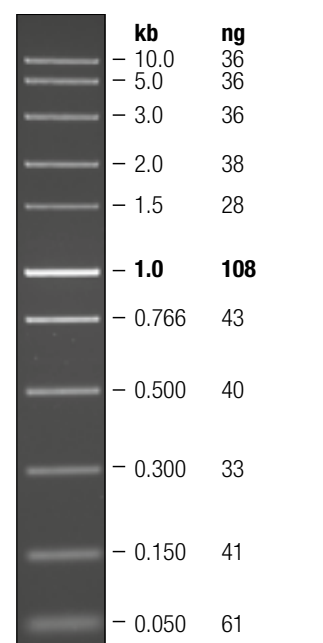
50 bp DNA Ladder
3% TBE agarose gel.
Mass values are for 1 µg/lane.
NEB #N3236
Also available as "ready-to-use":
Quick-Load Purple
NEB #N0556



Low Molecular Weight DNA Ladder
3% TBE agarose gel.
Mass values are for 0.5 µg/lane.
NEB #N3233
Also available as "ready-to-use":
Quick-Load Purple
NEB #N0557



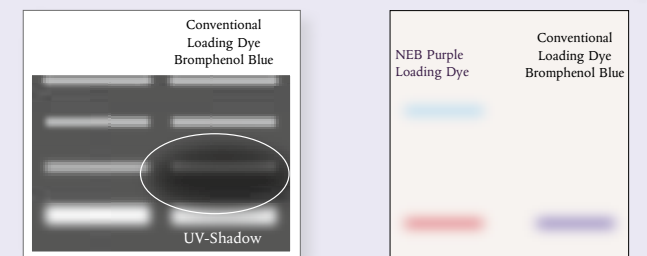
Supercoiled DNA Ladder
0.8% TAE agarose gel.
Mass values are for 0.5 µg/lane.
NEB #N0472



Fast DNA Ladder*
1.2% TBE agarose gel. Mass values are for 0.5 µg/lane.
NEB #N3238
*Fast DNA Ladder can be used for fast electrophoresis systems as well as standard electrophoresis.

NEB's DNA Ladders & Markers include a free vial of unique Purple Loading Buffer:

- Brighter, sharper bands vs. conventional loading buffers
- No UV shadow allows for publication grade images
- Stops enzyme reactions

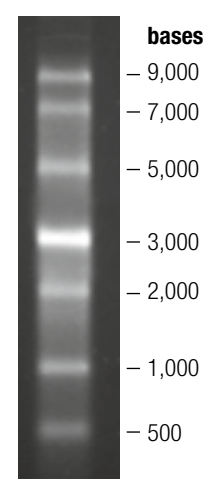


The new Gel Loading Dye, Purple (GX), no SDS, is included in most DNA ladders and Markers. This unique loading buffer does not cast a UV shadow over the underlying bands, unlike conventional Bromophenol Blue containing loading buffers.

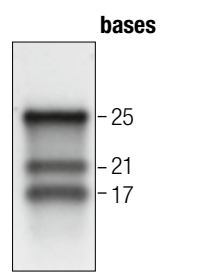
Also available for added convenience – "ready-to-use", pre-diluted ladder formats:

- **Quick-Load Purple** – containing the new purple loading dye
- **Quick-Load** – containing conventional Bromophenol Blue
- **TriDye** – containing three dyes for even better visualization

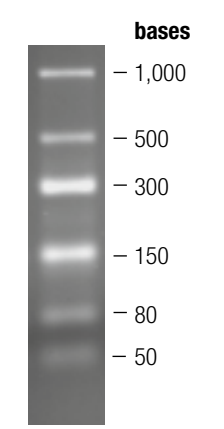
RNA Markers



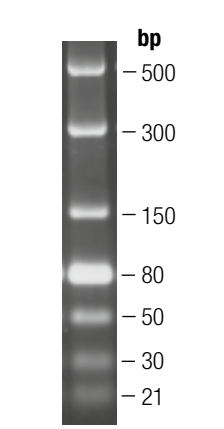
ssRNA Ladder
1.0% TBE agarose gel.
1 µg heated at 60 °C for 5 min prior to loading
NEB #N0362



microRNA Marker
60 ng (5 µl) on 12% denaturing polyacrylamide-urea gel.
SYBR Gold staining
NEB #N2102

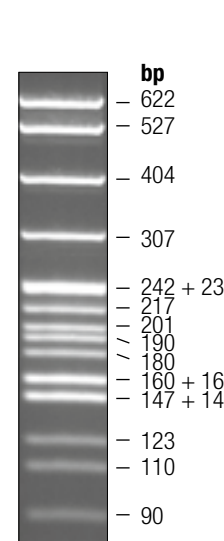


Low Range ssRNA Ladder
2.0% TBE agarose gel.
1 µg heated at 60 °C for 5 min prior to loading
NEB #N0364

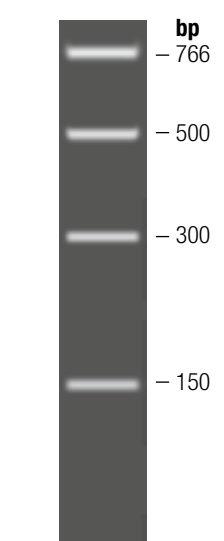


dsRNA Ladder
1.5 µg on 2.0% TBE agarose gel.
NEB #N0363

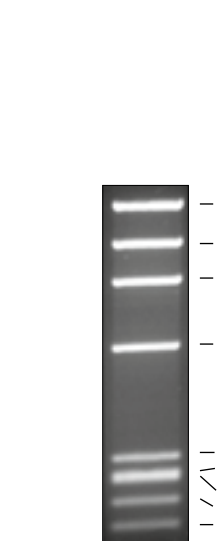
Conventional DNA & PFG Markers



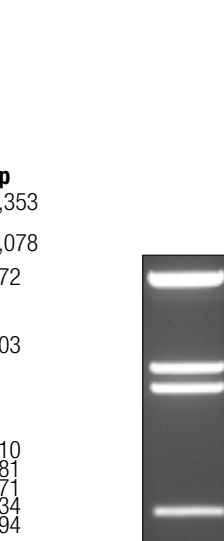
pBR322 DNA – MspI Digest
1.8% TBE agarose gel.
NEB #N0302



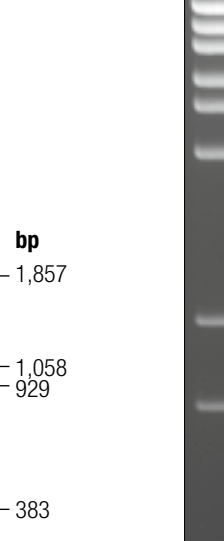
PCR Marker
1.8% TBE agarose gel.
NEB #N3234



phiX174 DNA – HaeIII Digest
1.7% TBE agarose gel.
NEB #N3026



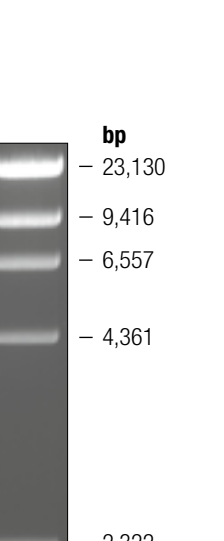
pBR322 DNA – BstNI Digest
1.4% TBE agarose gel.
NEB #N3031



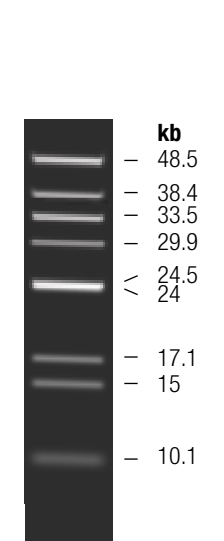
Lambda DNA – BstEII Digest
1.0% TBE agarose gel.
NEB #N3014



Lambda DNA – HindIII Digest
1.0% TBE agarose gel.
NEB #N3012

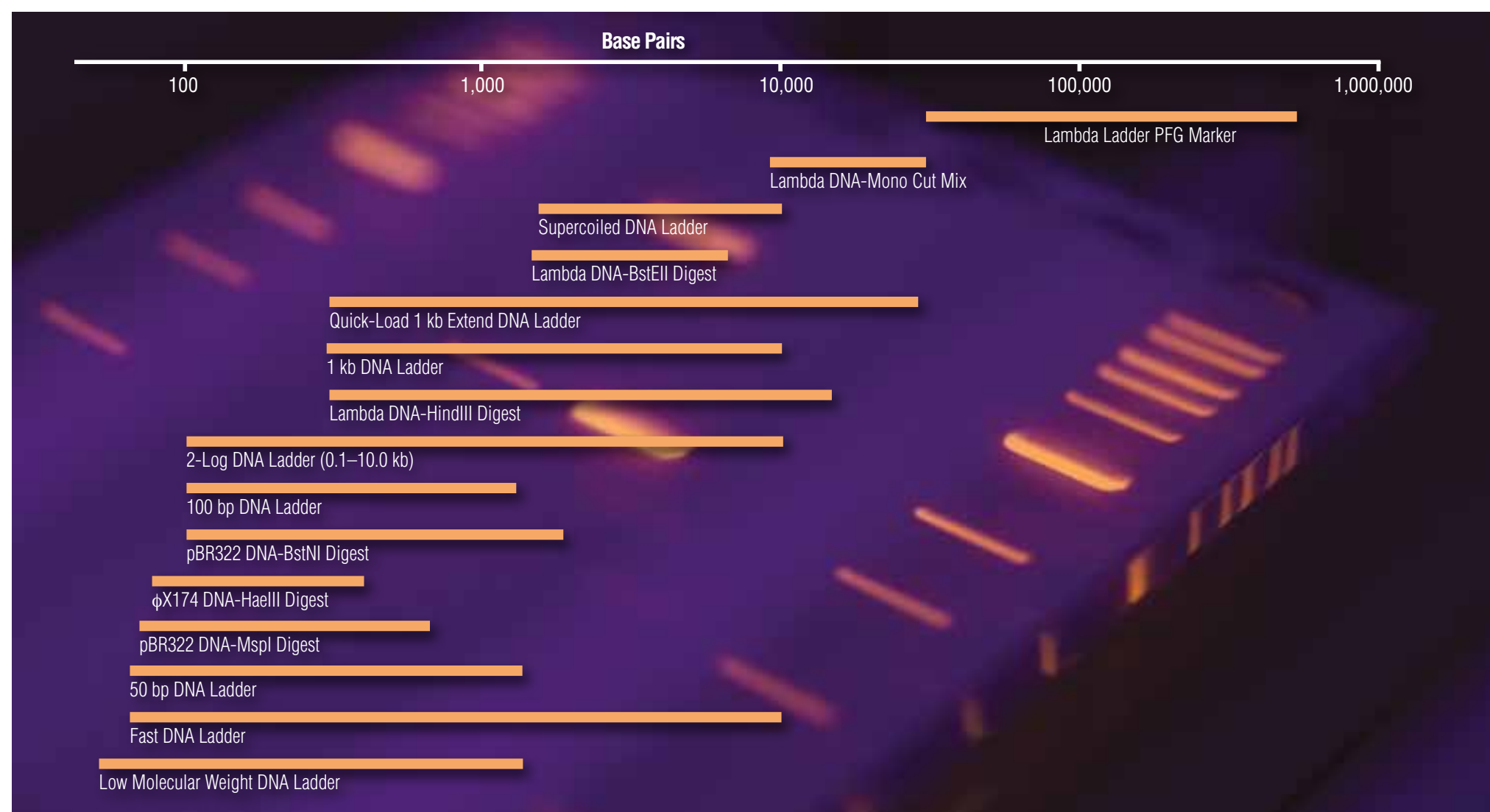


Lambda DNA – Mono Cut Mix
1% agarose gel. 6 V/cm, 15 °C for 20 h. Switch times ramped from 0.5-1.5 sec.
NEB #N3019

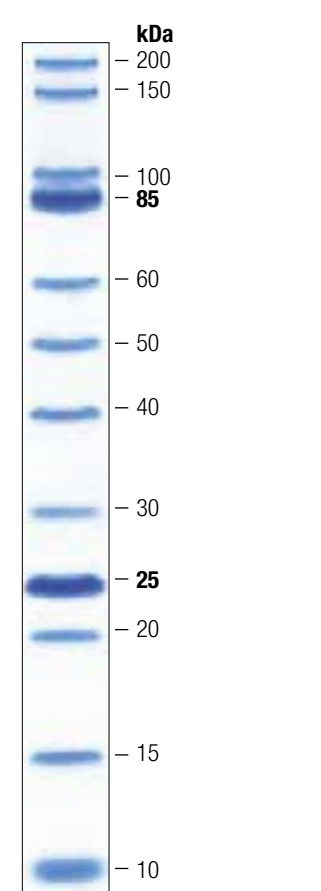


Lambda Ladder PFG Marker
1 µg/lane. 1% agarose gel. 4.5 V/cm, 15 °C for 48 h. Switch times ramped from 5-120 sec.
NEB #N0340

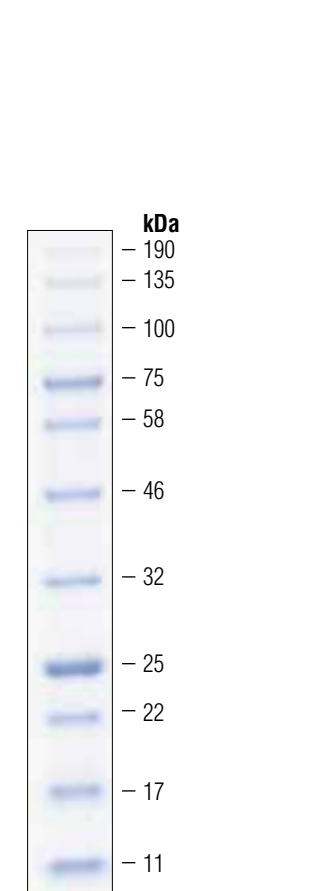
DNA Range Chart



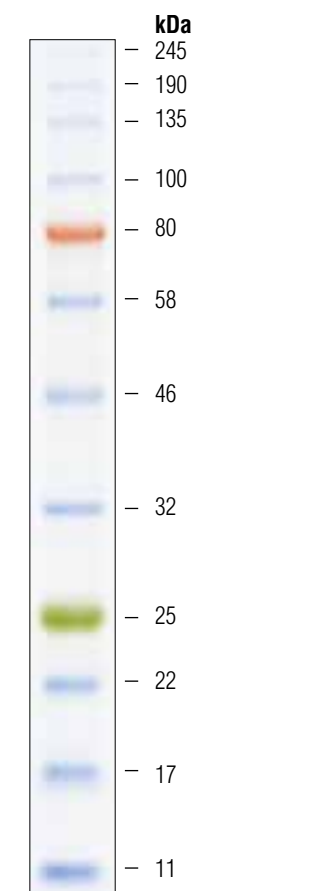
Protein Markers



Unstained Protein Standard, Broad Range (10–200 kDa)
10–20% Tris-glycine SDS-PAGE
NEB #P7704



Blue Prestained Protein Standard, Broad Range (11–190 kDa)
10–20% Tris-glycine SDS-PAGE
NEB #P7706



Color Prestained Protein Standard, Broad Range (11–245 kDa)
10–20% Tris-glycine SDS-PAGE
NEB #P7712